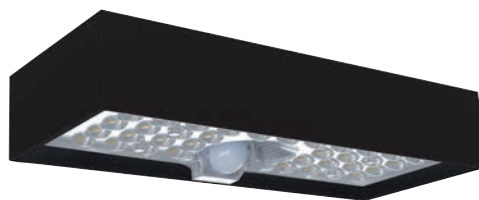
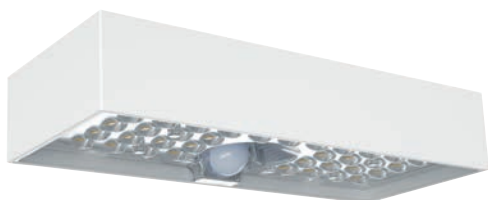
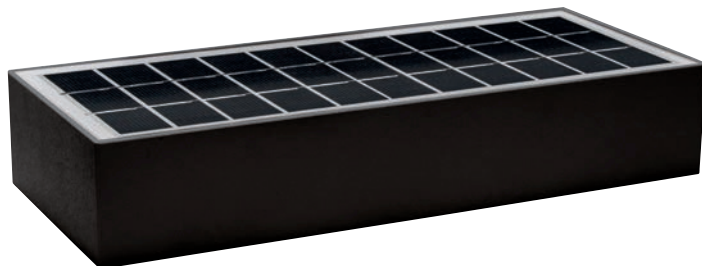


APPLIQUE RETTANGOLARE AD ENERGIA SOLARE CON SENSORE



DATI PANNELLO SOLARE:

Tensione: 5,5V

Potenza: 2,8W

Dimensioni: 210x76mm



Struttura in ABS e Policarbonato.
Pannello solare in silicio monocristallino.

Codice	Potenza	Tensione di alimentazione	Batteria Interna	Lumen TOTALE	Kelvin	Peso
39.9PLS346WC	6W	3,7V	Li-ION 18650 3.7V/3000 mAh	900lm (a piena carica)	3000K	570g
39.9PLS346WN	6W	3,7V	Li-ION 18650 3.7V/3000 mAh	900lm (a piena carica)	4000K	570g
39.9PLS346BC	6W	3,7V	Li-ION 18650 3.7V/3000 mAh	900lm (a piena carica)	3000K	570g
39.9PLS346BN	6W	3,7V	Li-ION 18650 3.7V/3000 mAh	900lm (a piena carica)	4000K	570g

DIMENSIONI

